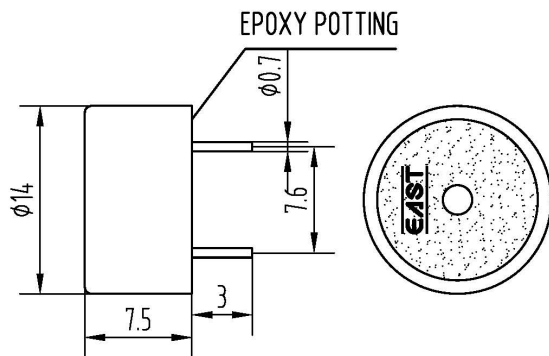
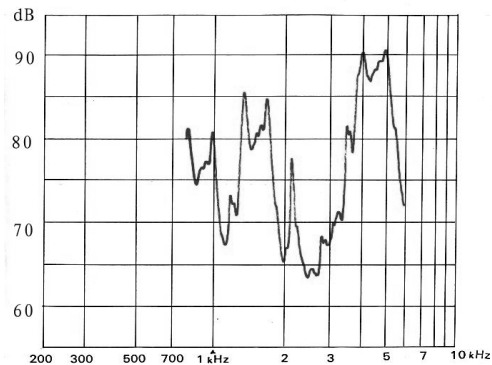


**External-driven Piezo Transducer****EFM-250D****DIMENSIONS: (Unit: mm)****FEATURES:**

- Compact Structure
- Sealed for Wave Soldering and Washing

**APPLICATIONS:**

- Automatic Control Equipment
- Communication Equipment
- Electronic Instruments

**CHARACTERISTICS:****ELECTRICAL SPECIFICATIONS:**

Min. Sound Pressure Level at

4.1kHz/5V<sub>p-p</sub> Square Wave/10cm.....80dB(A)

Capacitance at 1000Hz.....10nF±30%

Allowable Input Voltage.....20V<sub>p-p</sub>

Max. Consumption

at 4.1kHz/5V<sub>p-p</sub> Square Wave .....2mA

Oscillating Frequency..... 4.1±0.5kHz

Operating Temperature..... -40~+85°C

Case Material/Color.....PA6/Black

Weight..... 1g

**PACKING INFORMATION:**

Packing: 5000 pcs per export carton

Carton Size: 47x30.5x33cm

G. Weight: 6.5 kgs N. Weight: 5 kgs

Address: Multitrack GmbH, Pfaffenrain 22, 35606 Solms, Germany

Tel: +49-6442-9220950, Fax: +49-3212-1258768



| REVISION HISTORY |                    |                              |              |               |
|------------------|--------------------|------------------------------|--------------|---------------|
| REV              | DESCRIPTION        | ISSUED BY/DATE               | CHECKED      | APPROVED      |
| 3                | RELEASE            | JINYOULIANG<br>May 21, 2008  | ZHANGCHUNLEI | WANGJIANCHENG |
| 4                | Add "EAST" marking | WENGUANGJUN<br>June 15, 2009 | ZHANGCHUNLEI | WANGJIANCHENG |
|                  |                    |                              |              |               |
|                  |                    |                              |              |               |
|                  |                    |                              |              |               |